



TYPICAL MOTOR PERFORMANCE DATA

Model: MNET01502B2SBR

Serie: NEMA Elite

Issued Date	11/14/2022	Doc. #	390-R0
Issued By	LD	Issued Rev	0

HP	kW	Pole	FL RPM	Frame	Voltage	Hz	Phase	FL Amps
150.00	110.00	2	3575	S445TS	230/460	60	3	332/166
Enclosure	IP	Ins. Class	S.F.	Duty	Nom. Eff.	Nema Design	kVA Code	Ambient Temp. (°C)
TEFC	55	F (*)	1.15	CONT	95.0	B	40 C	0

* Inverter Duty

Load	HP	kW	Amperes	Efficiency (%)	Power Factor (%)
Full Load	150.00	110.00	166.0	95.8	88.3
¾ Load	112.50	83.90	126.0	94.9	87.7
½ Load	75.00	55.90	88.0	93.0	85.1
¼ Load	37.50	28.00	54.0	87.3	73.8
No Load			44.9		0.0
Locked Rotor			1066.0		24.1

Torque

Full Load (lb-ft)	Locked Rotor (% FLT)	Pull Up (% FLT)	Break Down (% FLT)	Rotor Inertia (lb-ft²)
220.00	155.0	105.0	255.0	43.88

Safe Stall Time(s) Cold / Hot	Sound Pressure dB(A) @ 1M	Bearings*		Approx. Motor Weight (lbs)
		DE	NDE	
35 / 13	84	6313C3	6313C3	0

*Bearings are the only recommended spare part(s).

Included Accessories:

All characteristics are average expected values.

Engineering		Doc. Written By		Doc.# / Rev	MNET01502B2SBR
Engr. Date		Doc. Approved By		Doc. Issued	



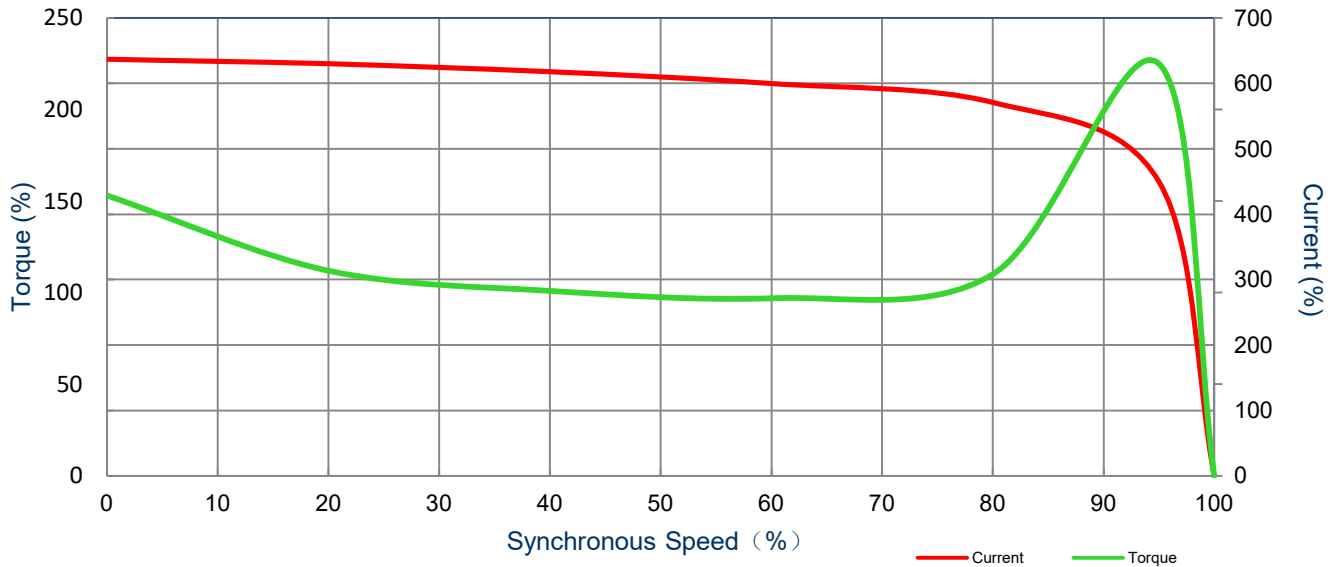
SPEED TORQUE/CURRENT CURVE

Model: MNET01502B2SBR

Serie: NEMA Elite

Issued Date	11/14/2022	Doc. #	390-R0
Issued By	LD	Issued Rev	0

HP	kW	Pole	FL RPM	Frame	Voltage	Hz	Phase	FL Amps
150.00	110.00	2	3575	S445TS	230/460	60	3	332/166
Enclosure	IP	Ins. Class	S.F.	Duty	Nom. Eff.	Nema Design	kVA Code	Ambient Temp. (°C)
TEFC	55	F (*)	1.15	CONT	95.0	B	40 C	0
Locked Rotor Amps	Rotor Inertia (lb-ft ²)	Torque						
		Full Load (lb-ft)	Locked Rotor (%)	Pull Up (%)	Break Down (%)			
1066.0	43.88	220	155.0	105.0	255.0			



All characteristics are average expected values.

Engineering		Doc. Written By		Doc.# / Rev	MNET01502B2SBR
Engr. Date		Doc. Approved By		Doc. Issued	

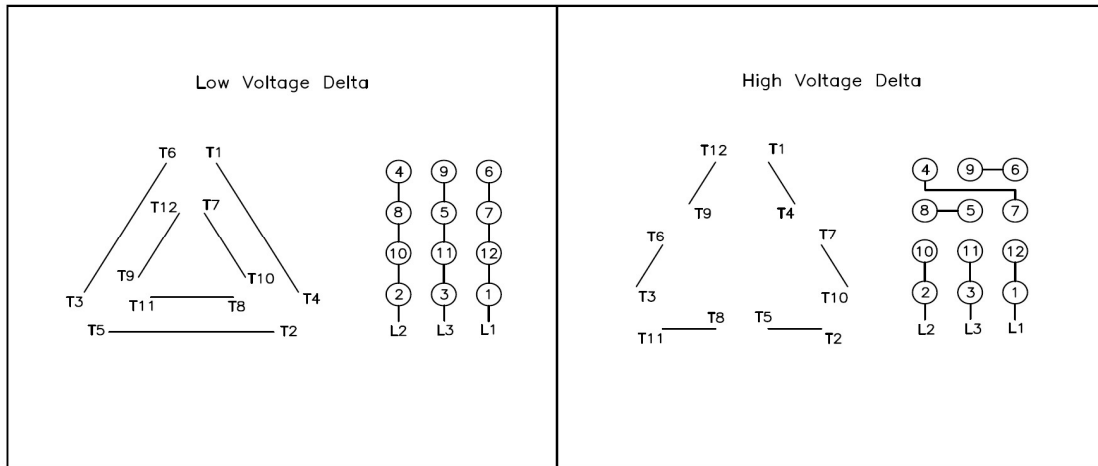
Issued Date	11/14/2022	Doc. #	390-R0
Issued By	LD	Issued Rev	0

Motor Connection Diagram

Model: MNET01502B2SBR

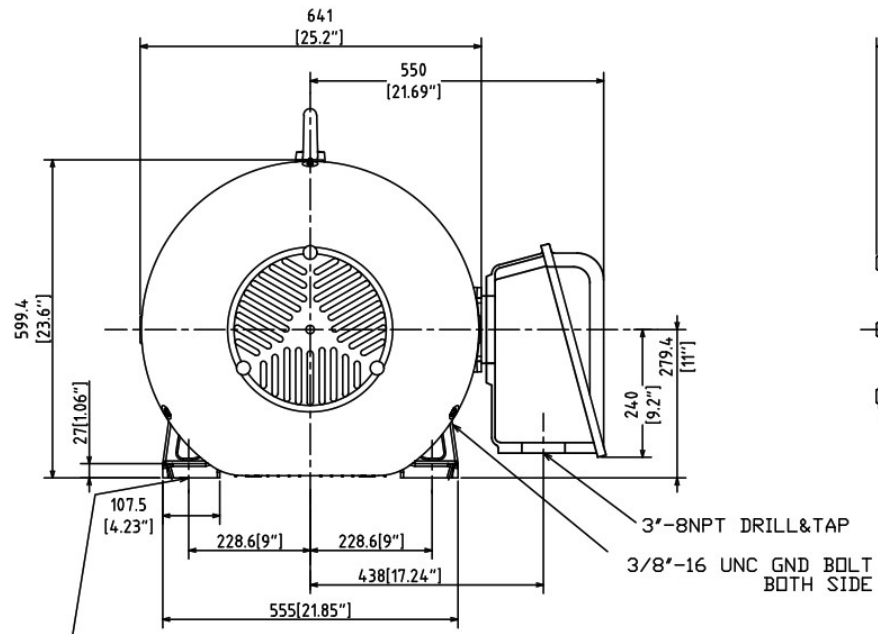
Serie: NEMA Elite

12 Leads Connection Diagram



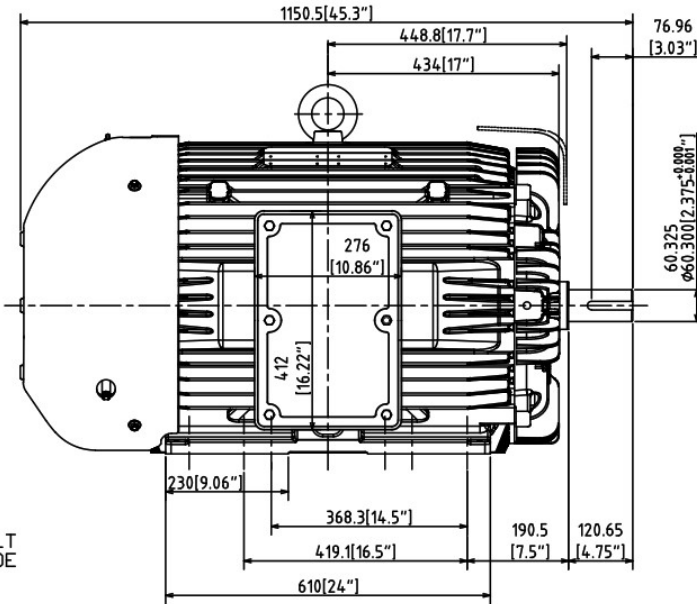
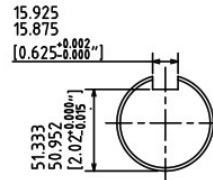
All characteristics are average expected values.

Engineering		Doc. Written By		Doc.# / Rev	MNET01502B2SBR
Engr. Date		Doc. Approved By		Doc. Issued	



NEMA MOUNTING HOLES
 DRILL THRU
 NEMA HOLE SIZE
 Ø21 (Ø13/16")
 12 PLACES

3"-8NPT DRILL&TAP
 3/8"-16 UNC GND BOLT
 BOTH SIDE



Units: inches		PROPRIETARY INFORMATION We reserve all rights in this document and in the information contained therein. Reproduction, use or disclosure to third parties without express authorization is strictly forbidden. Offenders will be held liable for payment of damages.	Notes:	
ROTATION FROM NDE			1. MAIN CONDUIT BOX MAY BE ROTATED IN 90 DEGREE INCREMENTS	
CCW	CW		2. STANDARD PRODUCT USES BI-DIRECTIONAL FAN. OPPOSITE ROTATION AVAILABLE ONLY BY CONNECTION CHANGE.	
↺	↻			
X				
TASHIDA RESERVES THE RIGHT TO MAKE CHANGES OF TECHNICAL IMPROVEMENT AND THE DATA MAY CHANGE WITHOUT NOTICE				PRELIMINARY
DO NOT USE FOR CONSTRUCTION, INSTALLATION, OR APPLICATION PURPOSES UNLESS THE DRAWING IS MARKED AS CERTIFIED				X CERTIFIED
<h1>Tashida</h1>	TOTALLY ENCLOSED FAN COOLED HORIZONTAL FOOT MOUNTED 3 PHASE INDUCTION MOTOR		Drawing #: MNET01502B2SBR	
			Rev. Date: 11/14/2022	Rev. #: 0
	Standard: NEMA	Mount.: F1		
	Frame: S444TS/S445TS	Per.:	LD	